



# Wolfgang Preinfalk GmbH

Solutions for the steel industry



*First Class Gear Technology*

---



## Wolfgang Preinfalk GmbH

We are an independent solution specialist for gear wheels, gearboxes and drive engineering. Almost all of the work steps in the manufacturing process are performed in-house at our headquarters in St. Ingbert.

Your benefit:

- Independent research & development department
- State of the art machinery
- Usage of material with European certificate of origin
- High requirements for the material quality of cast components, shafts and gearing components
- Own heat treatment shop
- Polished running gears of at least quality 5
- Usage of FAG, SKF and NSK quality bearings
- Grinding burn test
- Worldwide sales and service network

## Our business segments

### Gear manufacturing

- Mining
- Industry
- Steelworks
- Shipping

### Tooth gear production for OEM

- Wind energy
- Ship engines

### High-pressure pump systems

- Industry
- Longwall hydraulics
- Jetting / cooling

### Spare parts

- For our own gears and those of other manufacturers
- Couplings
- Other drive segments

### Service and maintenance

- Our own gears and those of other manufacturers
- Inspection and damage diagnostics
- Preventive solutions
- Upgrades & Modifications

## Drive solutions for the steel industry

We have been developing and producing gears and complete drive systems for over 30 years.

Take advantage of our know-how. We are your reliable partner for fulfilling your individual drive technology requirements. A wide selection of spur, bevel, and planetary gears are available for your production areas. If desired we will assemble them into complex drive units.

### Crude steel extraction

- Winch gears for positioning the oxygen lance



Installation of hoist gears

### Continuous casting plants

- Turn drives for ladle turrets
- Drive units for drive rollers
- Spur gears and bevel gears for roller bed drives



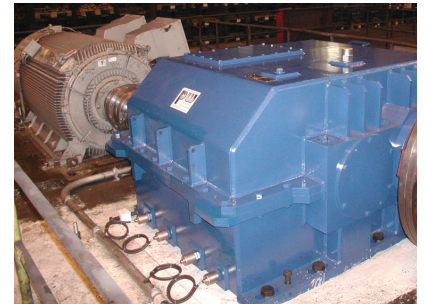
Installation of crane transmissions

### Rolling mills

- Pinion roller gears
- Drives for wire rod rolling mills
- Winch drives for coil framework
- Drives for straightening machines

### Finishing process

- Drives for grinding and sawing machines



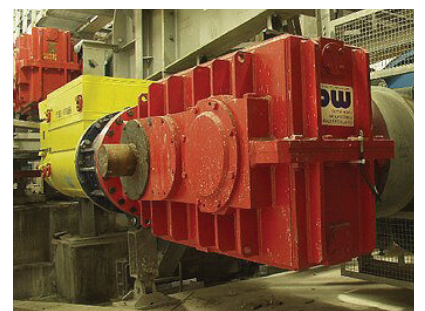
Roller drive

### Crane systems

- Hoisting gears
- Drive gears

### Conveyor technology

- Conveyor system drives
- Chain conveyor drives
- Crusher drives
- Mixer drives



Conveyor system

## **Our service**

We work together with you to plan your project:

- **Consulting and Engineering**
- **Procurement of High-quality, Certified Material**
- **Manufacturing and Assembly**
- **Installation, Instruction and Training**

## **Our service team is always there for you.**

Our global partnerships ensure that you always have a technician available on site.

Together, we will find a quick spare part solution for you, or we will offer a replacement product within the framework of a strategic partnership.

## **References**

- **Dillinger Hütte - Germany**
- **Bao Steel - China**
- **Saarstahl - Germany**
- **Tata Steel - formerly Corus - Netherlands**
- **ThyssenKrupp - Germany**
- **Donetsksteel - Ukraine**
- **ArcelorMittal - Luxemburg**

And many more...

## **Our sales team is looking forward to your queries**

### **Wolfgang Preinfalk GmbH**

Im Oberen Werk 4

66386 St. Ingbert

Germany

Tel.: +49 6894 3101-0

[sales@preinfalk.de](mailto:sales@preinfalk.de)

[www.preinfalk.de](http://www.preinfalk.de)